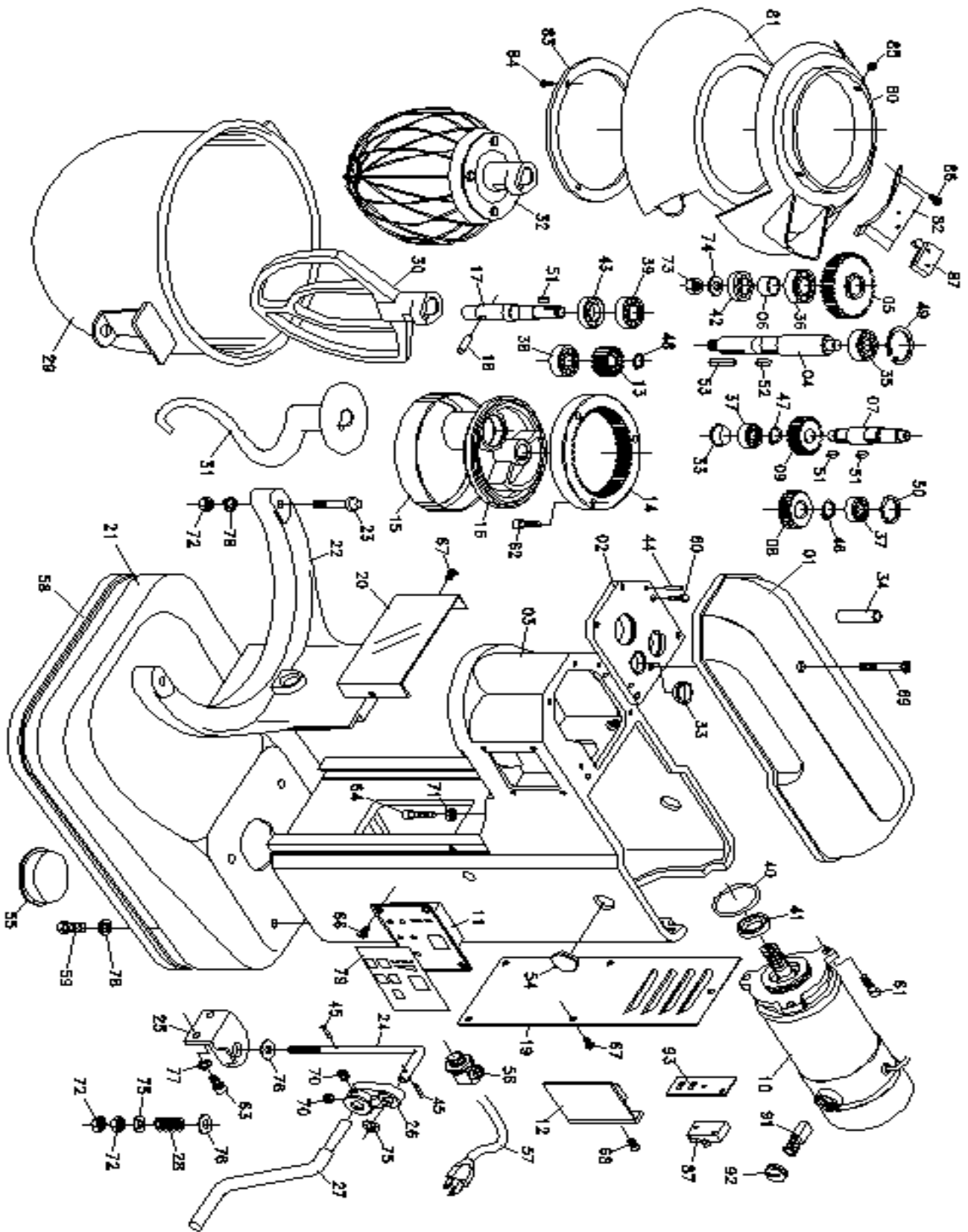


HL-11007 PARTS



HSIAO LIN MACHINE CO., LTD.

HL-11007 PARTS

ILLUS.	PARTS NO.	PARTS NAME	Q'TY
1	11007-01-001	Top Cover	1
2	11007-01-004	Retainer	1
3	11007-01-005	Mixer Head and Column	1
4	11007-02-001	Center Shaft	1
5	11007-02-003	Gear-Center Shaft	1
6	11007-02-010	Spacer	1
7	11007-04-001	Worm Gear Shaft	1
8	11007-04-002	Worm Gear	1
9	11007-04-003	Gear-Worm Gear Shaft	1
10	11007-05-001	Motor (100-120V) or (200-240V)	1
11	11007-07-001	Control Board	1
12	11007-07-002	IC Board (100-120V) or (200-240V)	1
13	11007-08-001	Planetary Gear	1
14	11007-08-002	Internal Gear	1
15	11007-08-003	Head Ring (for HL-11007 model only)	1
16	11007-08-004	Planetary Head	1
17	11007-08-005	Planetary Shaft	1
18	11007-08-007	Tapered Pin	1
19	11007-09-002	Rear Plate of Column	1
20	11007-09-003	Apron	1
21	11007-09-004	Base	1
22	11007-10-001	Bowl Support	1
23	11007-10-002	Bowl Pin	2
24	11007-11-001	Lifting Bar	1
25	PM10T-11-002	Fixed Angle Plate	1
26	11007-11-003	Lifting Bracket	1
27	11007-11-004	Lifting Handle	1
28	BM-11-005	Compression Spring	1
29	11007-12-001	7 Liter Bowl	1
30	11007-12-002	Flat Beater	1
31	11007-12-003	Spiral Hook	1
32	11007-12-004	Wire Whip	1
33	11012-04-008	Cover Plug	2

HSIAO LIN MACHINE CO., LTD.

HL-11007 PARTS

34	11007-01-002	Cover Fixed Tube	1
35	BR-6201Z	Ball Bearing	1
36	BR-6203Z	Ball Bearing	1
37	BR-6000Z	Ball Bearing	2
38	BR-6201Z	Ball Bearing	1
39	BR-6002Z	Ball Bearing	1
40	OR-G40	O-Ring	1
41	OS-TC153007	Oil Seal	1
42	OS-TC203007	Oil Seal	1
43	OS-TC173207	Oil Seal	1
44	SPP-5*28	Spring Pin	2
45	SPP-3*16	Spring Pin	2
46	CR-S16	C-Ring	1
47	CR-S14	C-Ring	1
48	CR-S12	C-Ring	1
49	CR-R32	C-Ring	1
50	CR-R26	C-Ring	1
51	KRR-4*4*10	Key	3
52	KRR-4*4*15	Key	1
53	KR-4*4*25	Key	1
54	PP-0001	Plastic Plug 3/4"	2
55	PP-0002	Plastic Plug 53mm	1
56		Cable Connector	1
57		Cable	1
58		Plastic Tube	1
59	S-5/16"*1/2"	Bolt	4
60	S-3/16"*1/2"	Bolt	5
61	S-S1/4"*1/2"	Screw	3
62	S-S1/4"*5/8"	Screw	3
63	S-S1/4"*3/8"	Screw	2
64	S-S1/4"*1"	Screw	1
65	S+R5/32"*1/4"	Mach. Screw	1
66	S+F1/8"*1/4"	Mach. Screw	4
67	S+R3/16"*1/4"	Mach. Screw	6
68	S+F3/16"*1/4"	Mach. Screw	2

HSIAO LIN MACHINE CO., LTD.

HL-11007 PARTS

69	S+F3/16"*2"	Mach. Screw	1
70	S-S5/16"*1/4"	Screw	2
71	NUT-1/4*20NC	Nut	1
72	NUT-5/16*18NC	Nut	4
73	NUT-3/8*16NC	Nut	1
74	W-3/8	Flat Washer	1
75	W-5/16	Flat Washer	2
76	W-5/16*23	Flat Washer	2
77	SW-1/4	Spring Washer	2
78	SW-5/16	Spring Washer	6
79	11007-01-007	Sticker of Control Panel	1
80	11007-13-001	Back Cover (for CE model only)	1
81	11007-13-002	Front Cover (for CE model only)	1
82	11007-13-003	Seat of Micro Switch (for CE model only)	1
83	11007-13-004	Fixed Ring	1
84	S+R5/32"*1/4"	Mach. Screw	4
85	S-S3/16"*3/16"	Screw	2
86	S+R3/16"*1/4"	Mach. Screw	4
87	V-155-1A5	Micro Switch	2
91	11007-05-002	Carbon of Motor	2
92	11007-05-003	Carbon Cover	2
93	11007-11-006	Limit Switch Seat	1